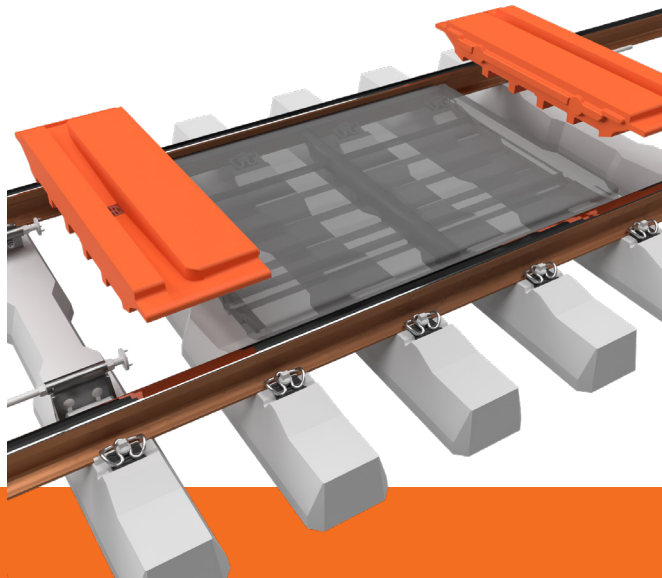


DRAINAGEPANEL

Flange groove drainage.

The base body of the drainage panel is made of recycled rubber with a new rubber cover layer to protect against wear. The drainage grid is made of stainless steel and is pre-assembled in the drainage panel with a form-fit.

- 450 mm groove and 450 mm tongue section based on **pedeSTRAIL**
- surface geometry for track groove drainage up to 100 mm superelevation
- suitable for track widening
- drainage opening \varnothing 80 mm
- depending on sleeper spacing
- for new projects or as a retrofit solution

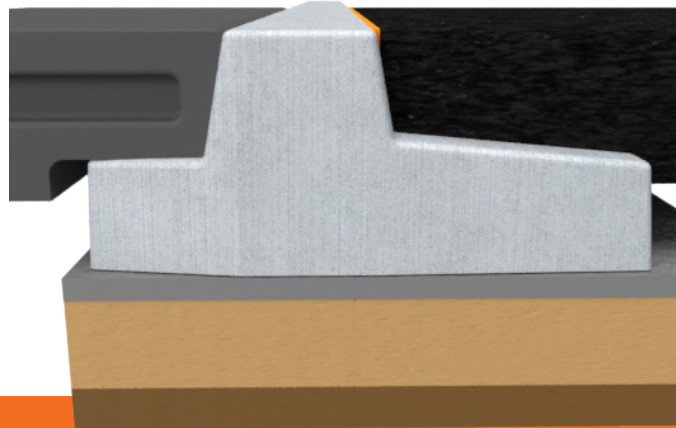


B-KERBSTONE

The further development.

We are also adapting to the structural changes at the level crossing and developing optimisations, for example the very easy and quick to install concrete wide kerbstone without foundations.

- no precast foundation parts required > therefore no drying times
- even faster installation times (by approx. 40 - 50 %) > shorter blocking times = **cost savings**
- better load transfer due to the large bearing surface of the kerbstones
- no need for a slow speed section in the opposite track
- corrections in vertical and horizontal direction possible (without great effort)
- optimised drainage



LEVEL CROSSING SYSTEMS TYPICAL **STRAIL**



ADDITIONAL PRODUCTS

www.strail.com



STRAIL **STRAIL**^{astic} **STRAIL**^{way}

KRAIBURG STRAIL GmbH & Co. KG

84529 Tittmoning // Göllstraße 8 // tel +498683 701-0 // info@strail.de

 www.strail.com

 [@strail_official](https://www.instagram.com/strail_official)

 [@kraiburg strail](https://www.linkedin.com/company/kraiburg-strail)

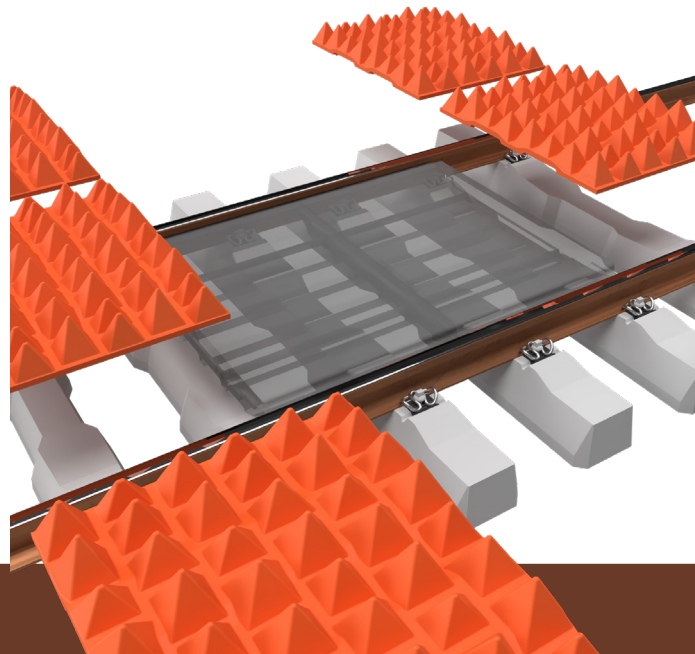
made
in
germany 

| STRAILgrid

Prevents access to the tracks.

STRAILgrid serves as a visual deterrent and makes it difficult or impossible to trespass on tracks by means of its irregularly arranged pyramid peaks at different heights.

- universal panel
- can be used between and next to the rails
- quick and easy manual installation and removal
- integrated drainage
- permanently screwed with intermediate elements

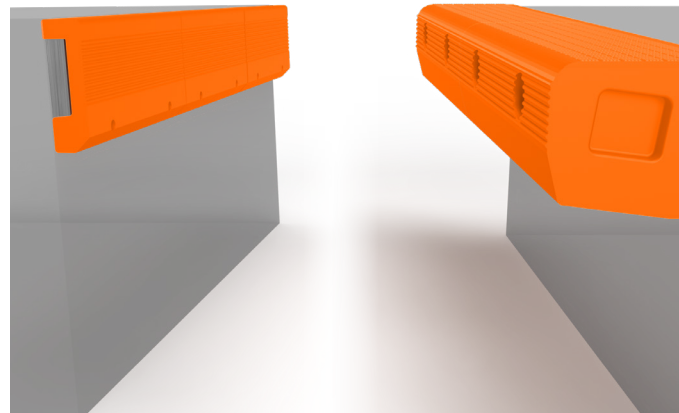


| STRAILEDge

Barrier-free platform edge.

The platform edge made of profiled rubber allows almost gapfree boarding and alighting and is completely barrier-free at doors of the same height. Due to its properties, the rubber prevents extending sliding steps from damage.

- customizable to fit your requirements
- gap-free boarding and alighting
- complete barrier-free access possible
- non-slip and safe to step on
- quick and easy installation and removal
- special fastening ensures stability and strength

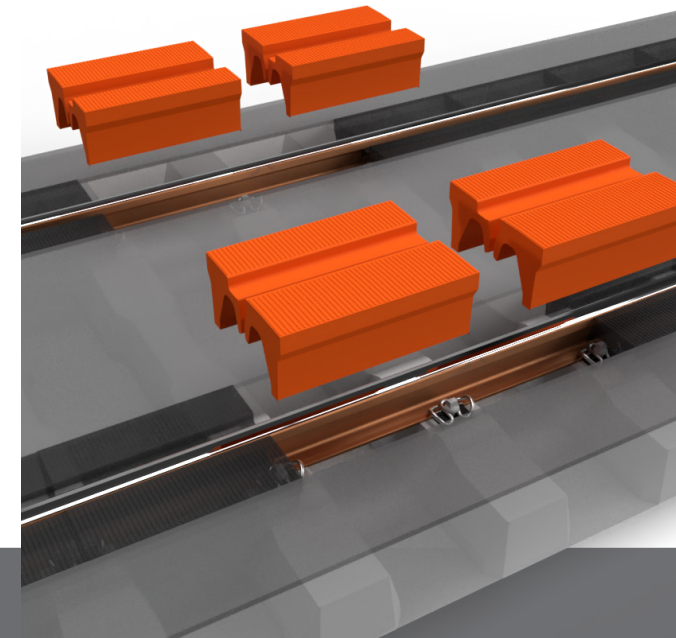


| profilSTRAIL

Profiles for maintenance halls.

profilSTRAIL accompanies the rail and is used in and in front of maintenance halls as well as on factory roads. It allows delivery vehicles and forklift trucks to cross the track comfortably and safely.

- eliminates tripping hazards and open gaps in the crossing area
- minimizes the flange groove
- quick and easy installation and removal
- allows quick access to the rail fastening at any time
- can be used as formwork for concrete grouting during initial installation



| pedeSOLAR

Solar-powered LED lights.

LED lighting elements arranged in rows as self-luminous markings make pedestrian crossings even safer. These light sources do not require a power connection because they are battery-powered, sunlight-fed, autonomous and maintenance-free LED units with a long service life.

- performance when fully charged: up to 240 hours without additional sunlight
- maximum visibility: approx. 900 m (depending on the course of the road)
- charging time approx. three hours
- for a temperature range from -20 °C to 85 °C

