



STRAIL[®]lastic **STRAIL[®]WAY**



STRAIL[®]lastic ***R-TYPE BIRMINGHAM*** 

Installation instructions

Subject to technical changes / 02_2020



KRAIBURG STRAIL[®] GmbH & Co. KG | STRAIL[®] | STRAILlastic | STRAILWAY

84529 Tittmoning | Goellstraße 8 | phone + 49 / (0) 86 83 / 7 01-0 | fax + 49 / (0) 86 83 / 7 01-126
info@strailastic.com | www.strail.com | www.strailastic.com | www.strailway.de

Green track system for vignol rail tracks:

Rail: 39E1

Fastening: Pandrol Clip PR401a and e2017

Support: Stanton Bonna VAX U21

Sleeper distance: 77,5 cm

PLEASE NOTE

This system is designed for a sleeper distance of 77,5 cm.

Adhere to all legal requirements as well as to all regulations regarding the protection of health and environment.

1 / REQUIREMENTS

- the track is completely preassembled and approved for the installation of green track profiles
- rail chambers are free of cinder and grate plates

Tools needed

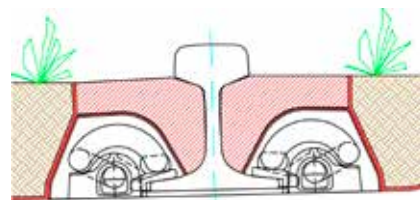
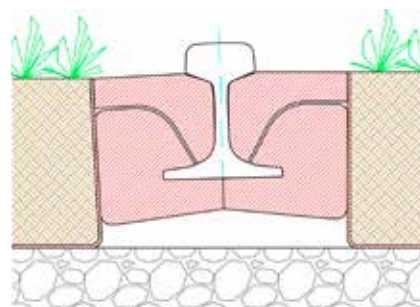
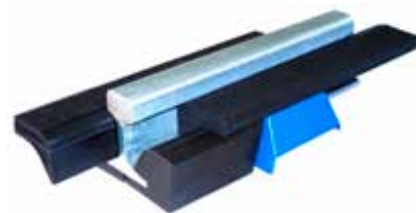
- hammer 1 – 3 kg plastic
- electric tenon saw, band, compound miter or chain saw

2 / PARTS OF INSULATION

- STRAILastic green track profiles bottom parts (length approx. 55,6 cm, identical inside and outside)
- STRAILastic green track profiles upper parts (length approx. 170 cm, identical inside and outside)
- STRAILastic cover caps for fastenings

3 / INSTALLATION

- arrange cover caps and green track profiles along the track
- we recommend to arrange the upper parts of the profiles only after the bottom parts and the cover caps were installed
- install covers caps over the fastenings
- put the bottom part profiles at the end of the rail foot between the sleepers and knock the profiles with a hammer on the rail foot
- knock in the upper part profiles with a hammer over the cover caps and bottom part profiles
- join the upper part profiles together by knocking on the front sides in order to create a gap-free surface > the profiles are self-clamping, **no glue is necessary**
- adjustments have to be made at rail joints (welded joints), junction boxes and other fittings (use an electric tenon saw or a band, compound miter or chain saw)
- afterwards the track superstructure have to be installed promptly and according to clients requirements
- the profiles can be removed for maintenance work and reinstalled again > the grass has to be removed partially at the profiles
- removing the profiles is done by inserting a crowbar into a joint and lifting it up
- reinstalling is carried out according to # 3 of these instructions.



PLEASE NOTE

Please read the document carefully and install **KRAIBURG STRAIL** products in compliance with the manufacturer's guidelines, or request assistance from our assembly team. This document is for information purposes only in connection with **KRAIBURG STRAIL** products. No intellectual property rights are granted by this document. No part of this document may be reproduced in any form in whole or in part without the express written permission of **KRAIBURG STRAIL**. **KRAIBURG STRAIL** expressly disclaims any infringement of the rights of third parties which are the intellectual, industrial or other property of third parties. Changes and errors are reserved.

The information provided in this document reflects our state of knowledge on the day of publication. The General Terms and Conditions of **KRAIBURG STRAIL** apply in the currently valid version.