



STRAIL[®]lastic **STRAIL[®]WAY**



STRAIL[®]lastic ***R-TYPE BERLIN***

Installation instructions

Subject to technical modifications / 02_2020



KRAIBURG STRAIL[®] GmbH & Co. KG | STRAIL[®] | STRAILlastic | STRAILWAY

D-84529 Tittmoning | Goellstraße 8 | Phone + 49 / (0) 86 83 / 7 01-0 | Fax + 49 / (0) 86 83 / 7 01-126
info@strailastic.com | www.strail.com | www.strailastic.com | www.strailway.de

Green track system for Vignol rail tracks:**rail:** S 49**fastening:** sleeper clip W14**support:** Rheda City concrete sleeper**sleeper distance:** independent

With steel angle reinforcement 80x80x8 mm

Use only genuine parts. If parts are used, which are not part of our delivery, warranty claim will be extinct.

Parts of insulation

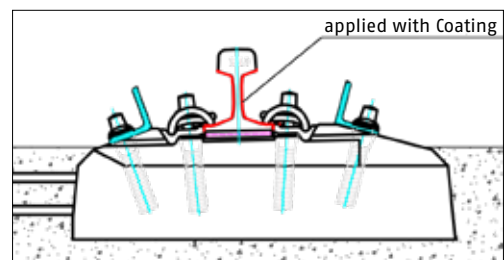
- lawn filler blocks inside
- lawn filler blocks outside
- steel angle 80x80x8 mm
- **STRAILastic** Coating

1 / REQUIREMENTS

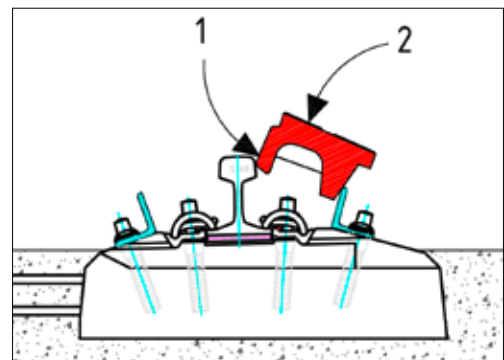
- The track is completely preassembled and approved for the installation of lawn filler blocks.
- Rail chambers are free of cinder and grate plates.

2 / PREPARATION

- Apply coating layer on the rail web and upper rail foot surface along the track (e.g. using a spray container or a portable pressure sprayer).
Application rate: 0,3 L/m track
- Arrange lawn filler blocks (inner and outer profiles), screws and steel angels along the track.

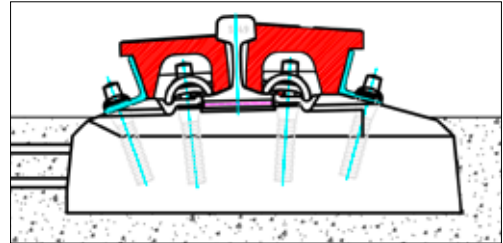
**# 3 / INSTALLATION**

- Install steel angles on its place on the sleeper and fix screws roughly (don't tighten).
- Place the lawn filler blocks so that they lie against the rail head and against the steel angle like in picture 2.
Take a hammer and knock the profiles down by knocking on the surface (1). Then hit down the elements on its place (2).
Then join the profiles together by knocking on the front sides in order to create a gap-free surface.

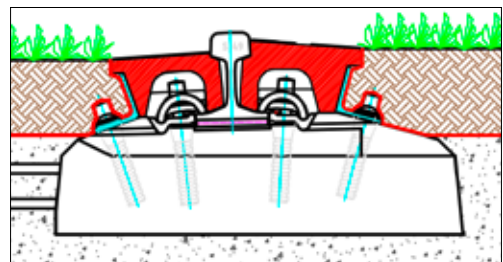


- The profiles have to be adjusted accordingly to rail joints (welded joints), junction boxes and other conditions. Electric tenon saws or chain saws lend themselves to that. (damp of accident)

- Then, the screws of the steel angles has to be tighten.



- The substrate can be installed subsequently according to the guidelines of the grass supplier.



- Removing the elements is done by inserting a crowbar into the air vent slot at the joint and lifting it up.
- Grease the rail head with a lubricant before reinstalling.
Carried out according to these instructions.

PLEASE NOTE

Please read the document carefully and install **KRAIBURG STRAIL** products in compliance with the manufacturer's guidelines, or request assistance from our assembly team. This document is for information purposes only in connection with **KRAIBURG STRAIL** products. No intellectual property rights are granted by this document. No part of this document may be reproduced in any form in whole or in part without the express written permission of **KRAIBURG STRAIL**. **KRAIBURG STRAIL** expressly disclaims any infringement of the rights of third parties which are the intellectual, industrial or other property of third parties.

Changes and errors are reserved.

The information provided in this document reflects our state of knowledge on the day of publication.

The General Terms and Conditions of **KRAIBURG STRAIL** apply in the currently valid version.