

Introducing **STRAIL[®]WAY 30**

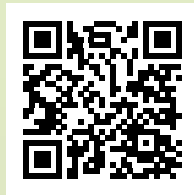
Unlocking the future of urban railways

In the fast-paced world of urban transportation, staying ahead of the curve while managing costs is crucial.

That's why we're thrilled to introduce **STRAILWAY 30**, the game-changing solution designed to revolutionize urban rail systems.

Set to debut at the end of 2023, **STRAILWAY 30** is ready to transform the way we think about track and turnout sleepers.

TRACK
TURNOUT
TUNNEL



Installation **STRAILWAY**



KRAIBURG STRAIL GmbH & Co. KG

84529 Tittmoning // Göllstraße 8 // Tel. 08683 701-0 // info@strail.de



www.strail.com

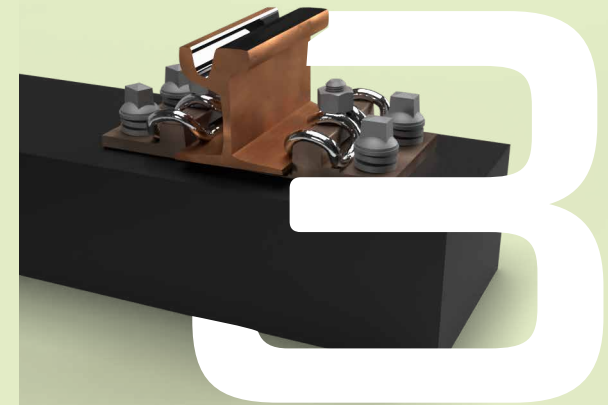


@strail_official



@kraiburg strail

STRAIL[®]WAY



Next generation of
POLYMER SLEEPERS



www.strail.com



@strail_official



@kraiburg strail

Product family STRAILWAY 30

STRAILWAY 30 is not a one-size-fits-all solution - it's a versatile product family.

We offer four distinct types to cater to your specific needs:

Turnout sleepers: Enhance rail flexibility and control for efficient routing.

Track sleepers: The sturdy backbone of your rail system, reducing maintenance and downtime.

Tunnel versions: Safety first! Our tunnel-specific versions of the track and turnout sleepers are robust, reliable, and fire-resistant for added underground protection.



Turnout sleepers
up to 13 meters long



Track sleepers



Tunnel versions
it is possible to add fire
protection toll both types

	Turnout sleeper	Track sleeper
Elastic modulus [MPa]	4800	3000
Thermal expansion [*10E-6 1/K]	37	50
Fire and fume	C _{fl} – s1	C _{fl} – s1
Fire and fume tunnel	B _{fl} – s1	B _{fl} – s1
Height [mm]	160 (+/-3)	160 (+/-3)
Width [mm]	260 (+10/-5)	260 (+10/-5)
Length [m]	max. 13 (+/-10)	max. 13 (+/-10)
Flatness of surface [mm]	1.0	1.5
Weight [kg/lfm]	50	50

Benefits of STRAILWAY



100% recycled
and recyclable



More than 50 years
of service life



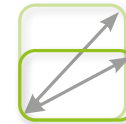
Processable without special
protective equipment



Maximum axle load 16 t



Maximum speed
120 km/h



Track & turnout sleepers



Can be processed
using standard tools



Low carbon footprint



Better screw pull out
forces than wood/concrete

STRAILWAY – is ECOLOGICAL

Environmental protection can go deeper because danger often lurks under the rails: wooden sleepers are usually impregnated with taroil derivatives (creosote). These are problematic for the environment and health. In many cases they have already been prohibited.

With the **STRAILWAY** polymer sleeper we offer you the perfect alternative.

The difference to other plastic sleepers: Neither synthetic resins nor steel reinforcements are used.

Good processability

